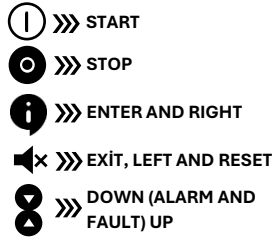
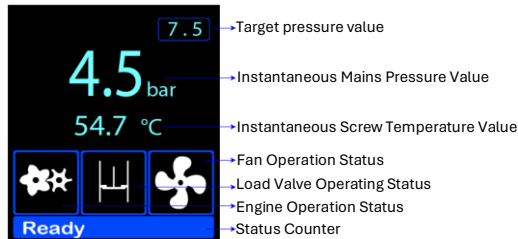
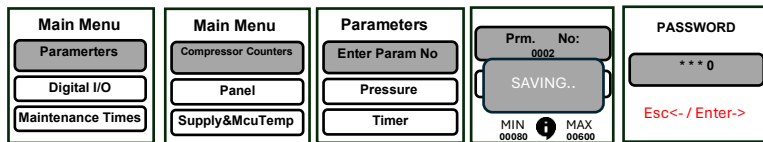


#### MAIN SCREEN AND BUTTON DEFINITION



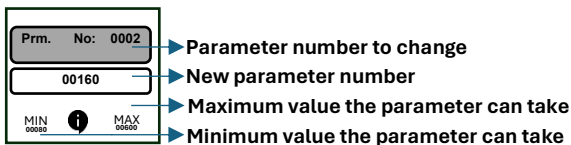
#### MAIN MENU AND USER INTERFACE



Press the Enter **i** button to enter and access the main menu. Use the Up and Down **8** buttons to change the selection. Press the Exit **✖** button to exit. This allows access to the submenus.

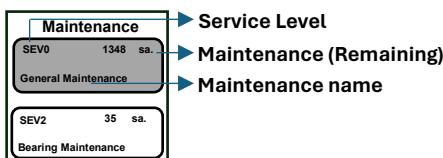
#### PARAMETER MODIFICATION

Press the Enter **i** button on the Main Menu and select the Parameters tab. Press the Enter **i** button to access the Enter Parameter Number tab. Enter the desired values using the Up and Down **8** buttons for incrementing and decrementing, and use the Right and Left buttons **i** **✖** for navigating between digits. Confirm the input by pressing the Enter button. To exit the menu without changing parameters, press and hold the Exit **✖** button.

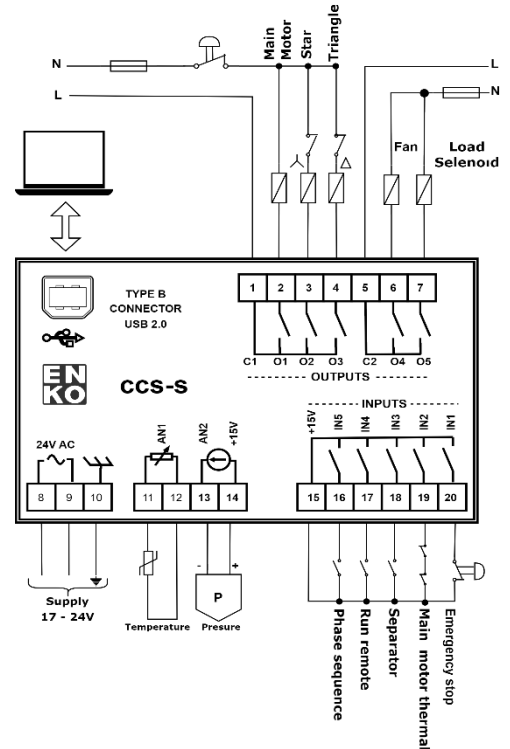


#### SERVICE TIME RESET

The service interval to be reset is selected using the up and down buttons. Then, the Exit button **✖** is pressed and held for 5 seconds.

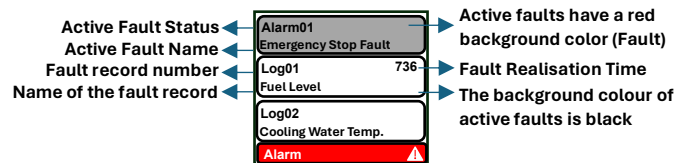


#### CCS-S CONNECTION DIAGRAM



#### ACTIVE FAULTS AND FAULT RECORDS


Active faults are listed on this page with a red background. Right below the list of active faults, the fault records list begins. On the main page, it opens by pressing the down **▼** button.



## PARAMETERS

	P.	PARAMETER DESCRIPTION	UNI.	L	MIN.	MAX.	DEF		P.	PARAMETER DESCRIPTION	UNI.	L	MIN.	MAX.	DEF
G R I D	501	Off Mode Selection	h	3	200	30000	2500	G E N E R A L	601	Factory Password		3	0	9999	1923
	502	High Voltage Alarm Level	h	3	200	30000	20000		602	Service Password		3	0	9999	1922
	503	Low Voltage Alarm Level	h	3	200	30000	5000		603	User Password		3	0	9999	1934
	504	High Frequency Alarm Level	h	3	200	30000	5000		604	ENKO Password		4	0	9999	xxxx
	505	Low Frequency Alarm Level	h	3	200	30000	2500		605	Maximum Number of Departures per Hour		3	2	9999	10
	506	Phase Sequence Control Action	h	3	200	32000	5000		606	Compressor Start Source		2	0	4	0
	507	Connection Type		3	0	1	0		607	Compressor Operation Mode		2	0	1	1
	508	Generator Connection Type		2	0	6	0		608	Idle Running Time S/D		2	0	1	0
P R E S S U R E	1	Pressure Sensor Type	Bar	3	80	600	160	T I M I N G	609	Horn Mode		3	0	1	0
	2	Discharge Pressure	Bar	1	0	600	75		610	Pressure Loss Prevention		2	0	2	0
	3	Load Switching Pressure	Bar	1	0	600	60		611	Save/Use Parameter		3	0	2	0
	4	Mains Pressure Error Value	Bar	2	1	600	85		613	License Selection		1	0	1	0
	5	Mains Pressure Warning Value	Bar	2	0	600	80		614	Factory Reset		3	0	2	0
	6	Screw Sensor Usage		3	0	1	0		615	Clear Failure Records		3	0	1	0
	7	Pressure Unit		1	0	1	0		616	Resetting Motor Run Times		3	0	1	0
	8	Load Standard Pressure	Bar	2	34	600	75		617	Menu Logout Time	min	3	1	30	3
T E M P E R A T U R E	401	Temperature1 High Error	C	3	-2000	2000	1000		618	Menu Logout		1	0	1	0
	402	Temperature1 High Warning	C	3	-2000	2000	900	T I M I N G	101	Start Delay	s	3	2	60	5
	403	Temperature1 Low Error	C	3	-2000	2000	-200		102	Downtime	s	3	0	180	20
	404	Temperature1 Low Warning	C	3	-2000	2000	-100		103	Air Evacuation Time	s	3	0	60	10
	405	Temperature Preheating	C	3	-2000	2000	100		104	Idle Working Time	s	3	0	300	10
	406	Temperature1 Sensor Type		3	0	2	0		105	Reload Time	s	3	0	60	5
	407	Temperature Unit		1	0	1	0		106	Automatic Standby Delay	s	3	0	1200	60
	408	Fan Operating Temperature	C	3	-2000	2000	800		107	Power Outage Delay	s	3	0	60	5
	409	Fan Stop Temperature	C	3	-2000	2000	600		108	Star Working Time	s	3	1	30	5
	410	Temperature Compensation Value	C	3	-2000	2000	0		109	Main Contactor Pull Delay	ms	3	0	100	30
	411	Screw Oil Freeze Prevention	C	3	-2000	100	-999		110	Star Triangle Transition	ms	3	0	100	30
C A L I B R A T I O N	701	Calibration Mains Pressure Offset		3	-9000	9000	0		111	Preheating Time at Load	s	3	0	60	10
	702	Calibration Mains Pressure Gain		3	-9000	9000	1000		112	Preheating Idle Time	s	3	1	120	15
	703	Calibration Temperature Offset		3	-9000	9000	0		113	Mains Pressure Error Delay	s	3	0	30	3
	704	Calibration Temperature Gain		3	-9000	9000	1000		114	Fan Maximum Operating Time	s	3	0	1200	20
									115	Horn Duration	s	3	10	999	60
									116	Dryer Time	min	3	0	60	50
									117	Booster Delay	s	3	0	120	60

	Output 1	Output 2	Output 3	Output 4	Output 5
Output Function	301	305	309	313	317
Default Value	1	2	3	8	4
Output Delay	302	306	310	314	318
Default Value	0	0	0	0	0
Output Contact Type	303	307	311	315	319
Default Value	NO	NO	NO	NO	NO
0: None	6: Warning	12: Stopping		18: Temperature Low Warning	
1: Main Contactor	7: Error+ Warning	13: Horn		19: Temperature High Warning	
2: Star Contactor	8: Fan	14: Dryer - Timing		20: Temperature Sensor Error	
3: Triangle Contactor	9: On load	15: Remote Start Active		21: Screw Pressure Sensor Error	
4: Load Valve	10: No load	16: Temperature Low Error		17: Temperature High Error	
5: Error	11: Working				
	Input 1	Input 2	Input 3	Input 4	Input 5
Input Function	201	205	209	213	217
Default Value	1	5	2	4	11
Input Delay	202	206	210	214	218
Default Value	0	3	3	1	3
Input Contact Type	203	207	211	215	219
Default Value	NO	NO	NO	NO	NO
0: None	1: Emergency Stop	2: Separator	3: Oil Pressure	4: Phase Sequence	5: Motor Thermal
6: Fan Thermal	7: Work Away	8: Start Button	9: Stop Button	10: Remote Load	11: Reserve-1
12: Reserve-2	13: Network Switch	14: Vida Sívici	15: Error Deletion	16: Lid Opened	17: Low Pressure

- NOT: If the password entered matches the current password and the menu exit time has elapsed, the password screen will appear again, prompting for re-entry.
- NOT: Errors and alarms that occur while in the main menu are reset but remain visible as information on the main screen. When returning to the main screen, pressing the reset button again is required.
- NOT: In test mode, pressing the start button for the first time initiates the generator, but if pressed a second time, the generator will start supplying power.
- NOT: In case of a fault or warning, a warning symbol appears in the bottom right corner of the screen, and the status bar flashes red or  blue depending on the severity of the fault.